

Children and Young People Activity Mapping

There are a multitude of groups supporting the children and young people agenda across Warwickshire. To help with understanding what the picture looks like, the Children and Young People Partnership (CYPP) has mapped these groups according to the geography they are working across:



System – Coventry and Warwickshire



County – Warwickshire



Place – North, Rugby, South

We have tried to split the groups between strategic and operational. However, in some cases there is overlap as operational groups may feed into strategic groups. Where this has happened, we have tried to make the type of group clear through colour coding.

The CYPP has also colour coded mapped groups to indicate whether they are strategic or operational and universal or targeted. In some cases, the links between groups is clear, whilst in others the relationship between groups needs to be worked through.



Overarching strategic boards and committees



C&YP Joint commissioning group (ICB)

DA Executive Programme Board (ICB)

Autism Partnership Board (ICB)

C&W CYP Mental Health & Wellbeing Board

Coventry & Warwickshire CDOP (ICB)

SEND Partnership Board



Corporate parenting board

Warwickshire Safeguarding Executive (All ages)

Safer Warwickshire Partnership Board

WCC Health and Wellbeing Board

Children's OSC

Warwickshire Safeguarding Children Partnership

Serious Organised Crime Strategic Group

Warwickshire Violence Against Women & Girls (VAWG) Board

Drug and Alcohol Strategic Partnership

WCC CYP Partnership

SEND & Inclusion Change Programme Board/steering group



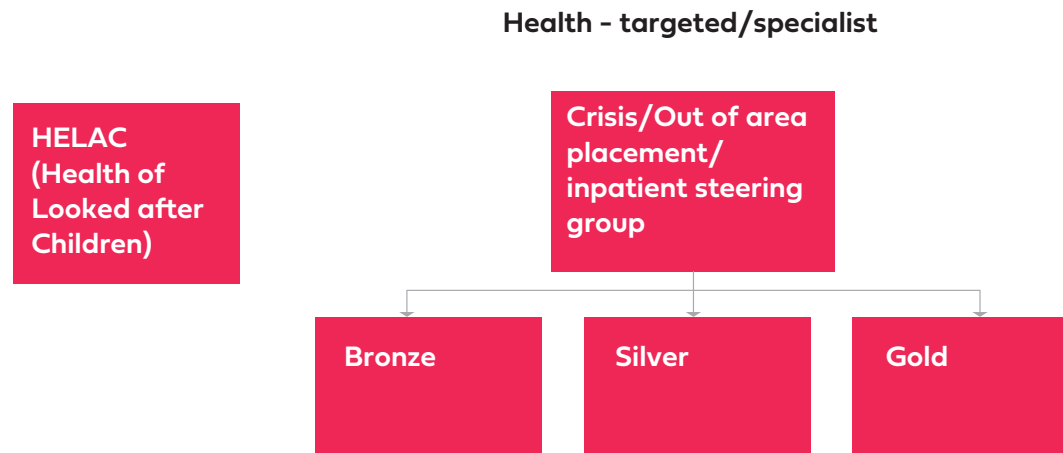
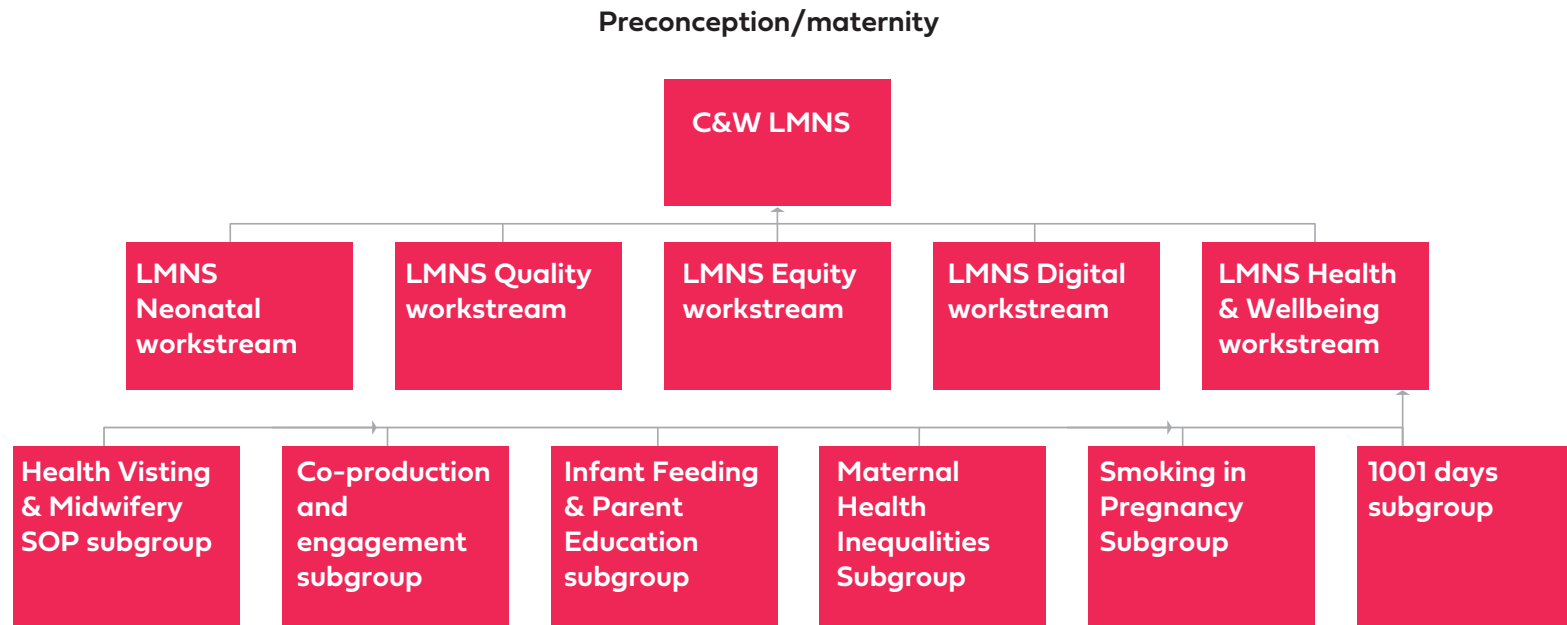
South Warwickshire Place Partnership

Warwickshire North Place Partnership

Rugby place partnership

Warwickshire Place Partnerships

Operational activity



Operational activity



Targeted offer - all ages (0-9)

